



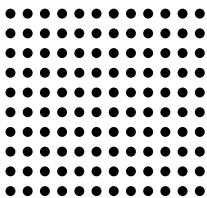
DIASFERA

łódzka

THE IDENTITY OF PLACE



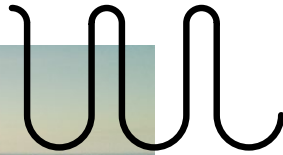
**DUDA
DEVELOPMENT**
EST. 1997



Implementation of Diasfera Łódzka, a residential building investment situated in the very center of Łódź, is divided into two stages. In total, 450 well-designed apartments will be built, of various floor areas, together with an underground parking space, locked bicycle storage room and general storage rooms. The second stage of this project, besides the apartments, also involves business premises.

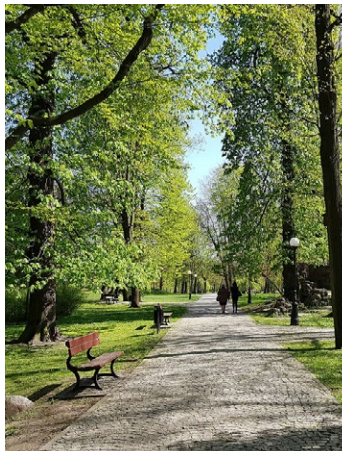
Location

Diasfera Łódzka will be erected between Kilińskiego Street and Targowa Street, on the yet unnamed, newly designed extension of Orła Street. Nearby you can find Księży Młyn, a historical complex of industrial buildings recorded on the UNESCO World Heritage List.



Other attractions within easy reach are the Źródłiska Park with a Palm House and the Film School of Łódź.

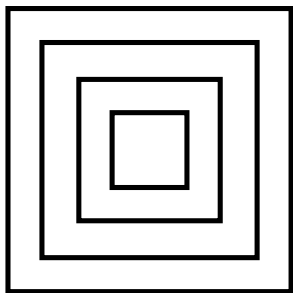
Within walking distance one can also find: the Łódź Shopping Centre, a gym, a lively promenade along Piotrkowska Street and OFF Piotrkowska – an alternative mixed-use development with food trucks, bars, clubs, music venues and studios.



Amenities

Distinctive architecture of Diasfera differs from other development projects. The choice of the architectural studio was made based on the results of the competition for the design of a modern townhouse announced by the city hall. The project was commissioned to the STAAM Architekt Marcin Sztajęrowski studio assisted by MODO architecture and ZOKOarchitekci. The works were done in consultation with the City Council and, in particular, with the city's Historic Preservation Officer. As a result, the design of this building is not only impressive, but also modern in a way that reflects the historical architectural style for which Łódź is so well-known.



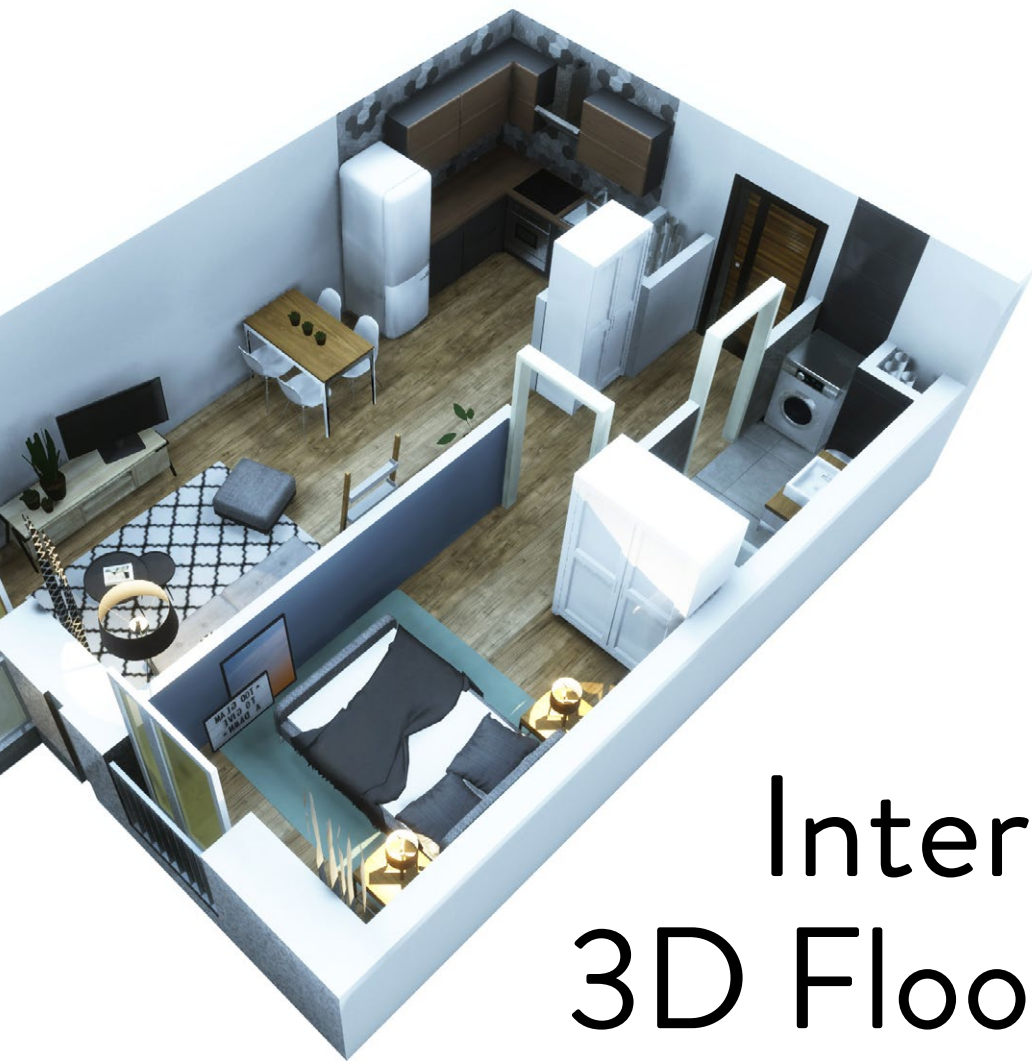


Residences

Stage one of Diasfera Łódzka construction consists of 199 apartments with a floor area between 25 and 95 m². It can suit both those who want to invest in rental property and those who seek comfortable accommodation for their family.



Well-designed and functional apartments allow for numerous interior design solutions customized to meet individual needs. The price for one square meter starts at PLN 5,600.



Interactive 3D Floor Plan

An interactive 3D floor plan provides an engaging visualization of Diasfera Łódzka and gives you an opportunity to go for a virtual walk and look around each apartment in the building. The floor plan makes it possible to see a sample decor of each of the lodgings and to look through their windows at different times of the day.



DIASFERA
ł ó d z k a

Sales Office in Łódź:

ul. Kilińskiego 138 (opposite the Ambassador Hotel)

tel: +48 605 505 995

diasfera@dudadevelopment.pl

opening hours:

Monday-Friday 9.00 – 17.00

Saturday 9.00-13.00

Head Office of Duda Development in Poznań

ul. Palacza 144, Poznań

tel: +48 61 646 84 44

biuro@dudadevelopment.pl



**DUDA
DEVELOPMENT**
EST. 1997